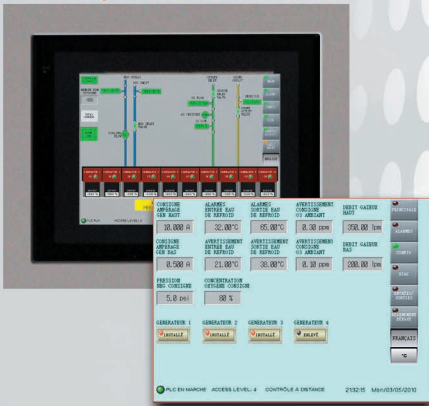


SPECIFICATION SHEET


SUMMIT OZONE GENERATOR SYSTEM


Compact Summit System Footprint

Summit System User Touchscreen


Summit series ozone systems from Pinnacle Ozone have been designed for municipal, commercial, industrial and food & beverage users requiring ozone to be delivered in a specific output rate with no deviation or shut down. These systems are designed to provide unparalleled output and redundancy without the requirement of a spare ozone generation system. There are three available **Summit** systems which are configurable into the following output ranges below.

160 lbs. per day | 180 lbs. per day | 200 lbs. per day

Custom ozone outputs are also available/programmable for each system.

Specifications

| Summit Systems | Summit-160 | Summit-180 | Summit-200 |
|------------------------------------|---|---------------------------------|---------------------------------|
| Ozone Output (5% by wt.) | 160 lbs./day | 180 lbs./day | 200 lbs./day |
| Total QuadBlocks® | 8 | 9 | 10 |
| Oxygen Flow Rate | 640 LPM | 720 LPM | 800 LPM |
| Oxygen Output Purity | >90% | >90% | >90% |
| Power Requirements | 240 VAC, 3Ø, 46A | 240 VAC, 3Ø, 53A | 240 VAC, 3Ø, 59A |
| Water Coolant Flow | 12 gal / 30.3 LPM | 13.5 gal / 34.0 LPM | 15 gal / 37.9 LPM |
| Coolant Water Temp. | 50-65°F / 10-20°C | 50-65°F / 10-20°C | 50-65°F / 10-20°C |
| Enclosure (fan cooled) | Hoffman Concept | Hoffman Concept | Hoffman Concept |
| Dimensions / Weight | 80.0"H x 64.0"W x 35"D 1490 lbs | 80.0"H x 64.0"W x 35"D 1620 lbs | 80.0"H x 64.0"W x 35"D 1750 lbs |
| Facilities Connections: | | | |
| Oxygen Inlet | ¾" SS, Comp. | 1" SS, Comp. | 1" SS, Comp. |
| Ozone Outlet | ¾" SS, Comp. | 1" SS, Comp. | 1" SS, Comp. |
| Cooling Water In/Out | ¾" SS, Comp. | ¾" SS, Comp. | ¾" SS, Comp. |
| Instrumentation: | | | |
| O ₂ Flow Meter Rate (2) | 500 LPM | 500 LPM | 500 LPM |
| O ₂ Pressure Sensor | 1 | 1 | 1 |
| O ₂ Conc. Sensor | 1 (0-100%) | 1 (0-100%) | 1 (0-100%) |
| Water Temp. Sensor | 2 (in/out) | 2 (in/out) | 2 (in/out) |
| O ₃ Pressure Sensor | 1 | 1 | 1 |
| User Touchscreen | 1 (12" screen) | 1 (12" screen) | 1 (12" screen) |
| PLC | Omron CJ1 | Omron CJ1 | Omron CJ1 |
| O ₃ Output Control | 0-100% | 0-100% | 0-100% |
| Remote Control | On/Off Control via Dry Contact. Output Control 4 – 20 ma. | | |
| Remote Access | Ethernet / TCP/IP | Ethernet / TCP/IP | Ethernet / TCP/IP |
| UL-508A / CSA Listing | Available Upon Request | | |
| Ambient Ozone Sensor | 1 included (2 spare inputs) | 1 included (2 spare inputs) | 1 included (2 spare inputs) |

PINNACLE
 OZONE SOLUTIONS

Corporate & Manufacturing Offices:
 3001 Oxbow Circle, Cocoa, Florida 32926
 phone: 321.205.1717
 fax: 321.205.1718
 email: sales@pinnacleozone.com
 web: www.pinnacleozone.com